

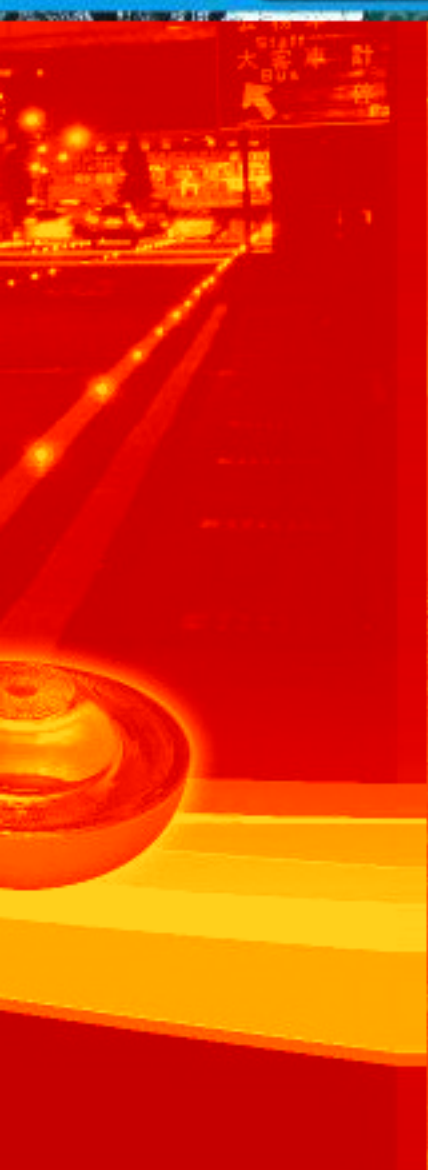
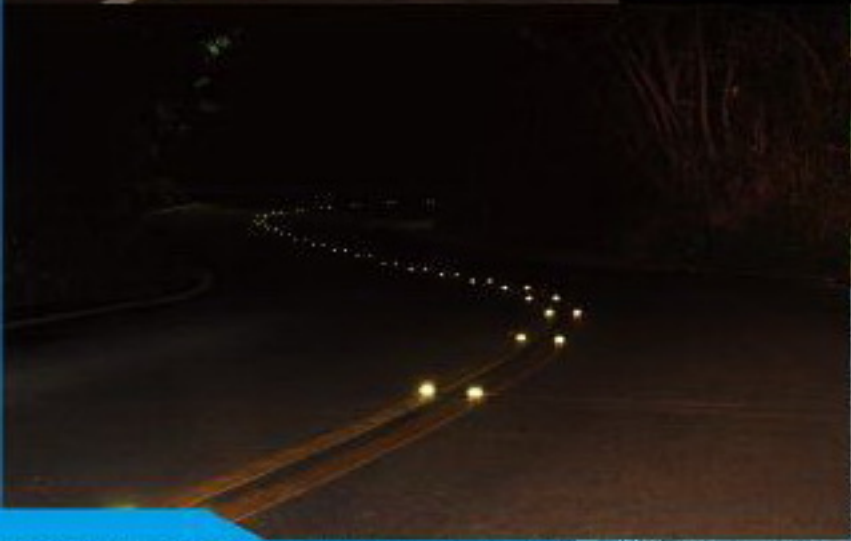
**20** years professional manufacturing and experience in tempered glass road studs.

The World's Most Durable Road Marking Reflector  
SIGLITE 360° tempered glass road marking reflector

*TigerEye*



**SEIH-YING CO., LTD.**



SEIH-YING CO., LTD. (Taiwan)





Best choice for road construction



Safe, Economical, Conserving Energy, Protecting Environment, Hi-Tech

Why do highways need high strength of 360 degree tempered glass road marking reflectors?

■ **Safe:** The deficiency of thermoplastic road marking lines giving no reflection during rainy nights is remedied. The 360 degree reflection of Siglite eliminates blind spots at any dangerous curves and reduces accidents.

■ **Economical:** Long service life of Siglite reduced the cost of marker replacements significantly. Dust does not accumulate easily on the product surface and no washing maintenance is required.

■ **Conserving Energy:** The extreme low repair frequency with Siglite reduces the social cost of traffic jam (i.e. consumption of time and petrol) caused by marker replacement.

■ **Protecting Environment:** The main ingredient is SiO<sub>2</sub>, which is natural and causes no pollution to the environment.

■ **High-technology:** Siglite gives the highway the quality of modern technology, as well as offering vehicle drivers safety, comfortable and aesthetical function of road guidance during the nights

The deficiency of thermoplastic road marking lines giving no reflection during rainy nights is remedied

SIGLITE – Lighten your way home



Why are Seih-Ying's Siglite 360 degree tempered glass road marking reflectors the best choice for traffic safety on highways?

■ The Siglite is fully tempered (i.e. the glass shatters into small particles if broken, which causes no human injuries or vehicle damages).

■ The Siglite has the highest compressive strength in the world (more than 40 tons for AA class and more than 60 tons for AAA class).

■ The Siglite has the highest impact strength (when using 1.04 kg of steel ball to free fall from 1 m of height and impact the marker's surface, no damage is shown).

■ Safe product with legal certification

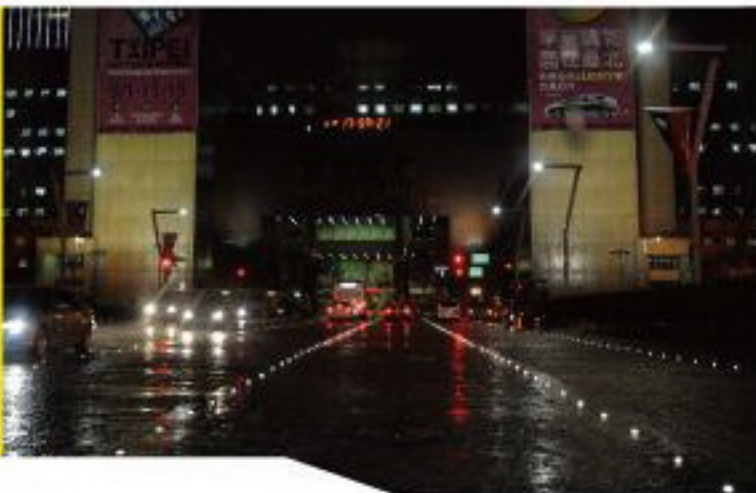
Test Standard	Year	Region
CE certificate	2008	Europe
DIN EN 1463-2	2006	Europe
ISO 9001	2006	Taiwan
JT/T 390-1999	2005	China
DIN EN1463-1	2004	Europe
CNS13762	1997	Taiwan

■ Quality guarantee on freeways (less than 5% of breakage rate over 5 years)

■ Professional manufacturing with 20 years of experience (established since 1990).

■ Supply of complete product range with largest capacity in the world.





## GLASS: Guide, Luminosity, Alert, Safety, Strength

History	
Established in 1990	First professional manufacturer in Asia that produces the 360 degree tempered glass road marking reflectors applied with patents in USA, Japan, Germany, China, South Korea and Taiwan
1997	First manufacturer in Taiwan that passed the CNS 13762
1998	Development of first solar tempered glass warning marker in the world and started batch production with patents in USA, China and Taiwan
2004	Approval of EU's EN1463-1 Development of the all-position tempered glass warning reflector (D50)
2005	Approval of A2 category of road studs under China's standard for transportation industry (JT/T390-1999)
2004 & 2005	More than 85% of market share in Taiwan with export to other countries around the world
2006	Approval of ISO9001 Approval of EU's EN1463-2 certification and acquisition of highest class of R1 (test illuminance greater than 99% of original illuminance after 1 year of installation) and S1 (no breakage after 1 year of installation)
2008	Approval of EU's CE certification (by BSI in UK)
2009	The compressive strength of 360 degree tempered glass road marking reflectors produced was increased to 60 tons



### Comparison between Seih-Ying and other brands

	Seih-Ying	Class B	Class C
Tempered level	Fully tempered	Semi tempered	Non-tempered
Compressive strength (as per CNS 13762)	Over 40 tons for A class and over 60 tons for AA class	15-25 tons	Less than 4 tons
Impact strength (1.04 kg of steel ball free falling from 1.5 m of height)	No damage	Crack on glass surface	Broken into sharp glass particles
Reflection illuminance (as per CNS 13762)	1 <sup>st</sup> class product	2 <sup>nd</sup> class or inferior product	Inferior product
Service Life	5-10 years	1-2 years	Dangerous and not applicable



■ Non-tempered glass road stud



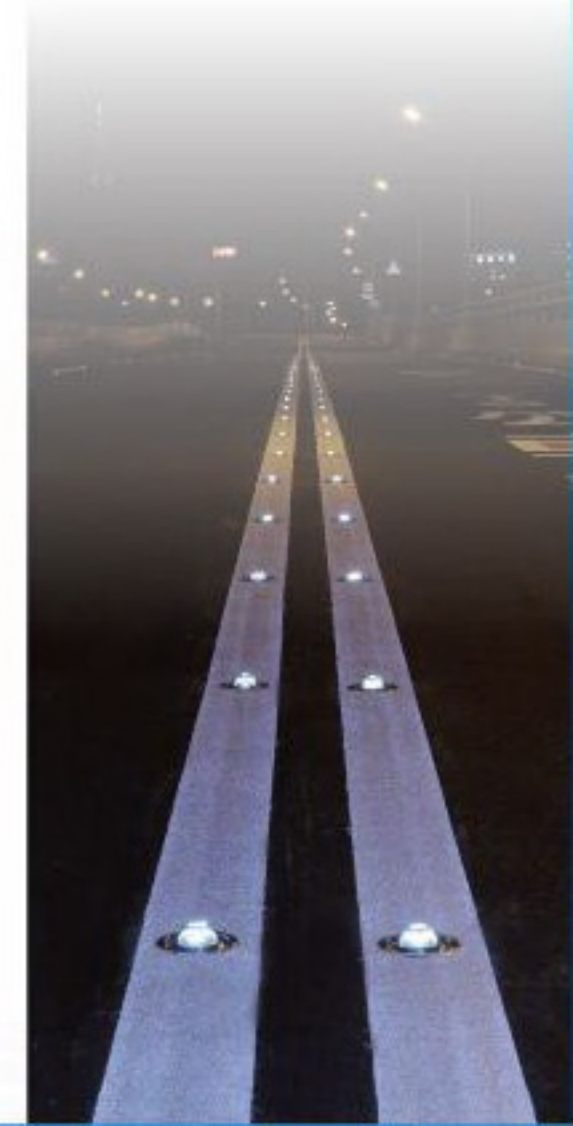
■ Semi-tempered glass road stud



■ Fully-tempered glass road stud



Compressive resistance test machine





**Quality policy:**  
**Satisfaction of client's demands, establishment**  
**of trust, stable quality and sincere service**

Siglite 360 degree tempered glass road marking reflector series

Item	Model no.	Color	Application
Siglite 360 degree tempered glass road marking reflectors	SIG-25	Yellow, white	Lane lines and center lines of general highways
	SIG-19	Yellow, white	Lane lines, side lines and center lines of highways, expressways and urban roads
	<b>SIG-19sp</b> Recommend	Yellow, white, blue, green	
	SIG-14sp	White	Lane lines and side lines of freeways and expressways
	Production on request	Dual-color	Yellow/red, red/white
180 degrees		White/black, red/black, green/black	
Siglite all-position tempered glass warning reflector	SIG-D50	Yellow, white	Urban roads, traffic islands, barriers, parking lots, bikeways, pedestrian walks, bridge abutments and tunnel walls

Product features:

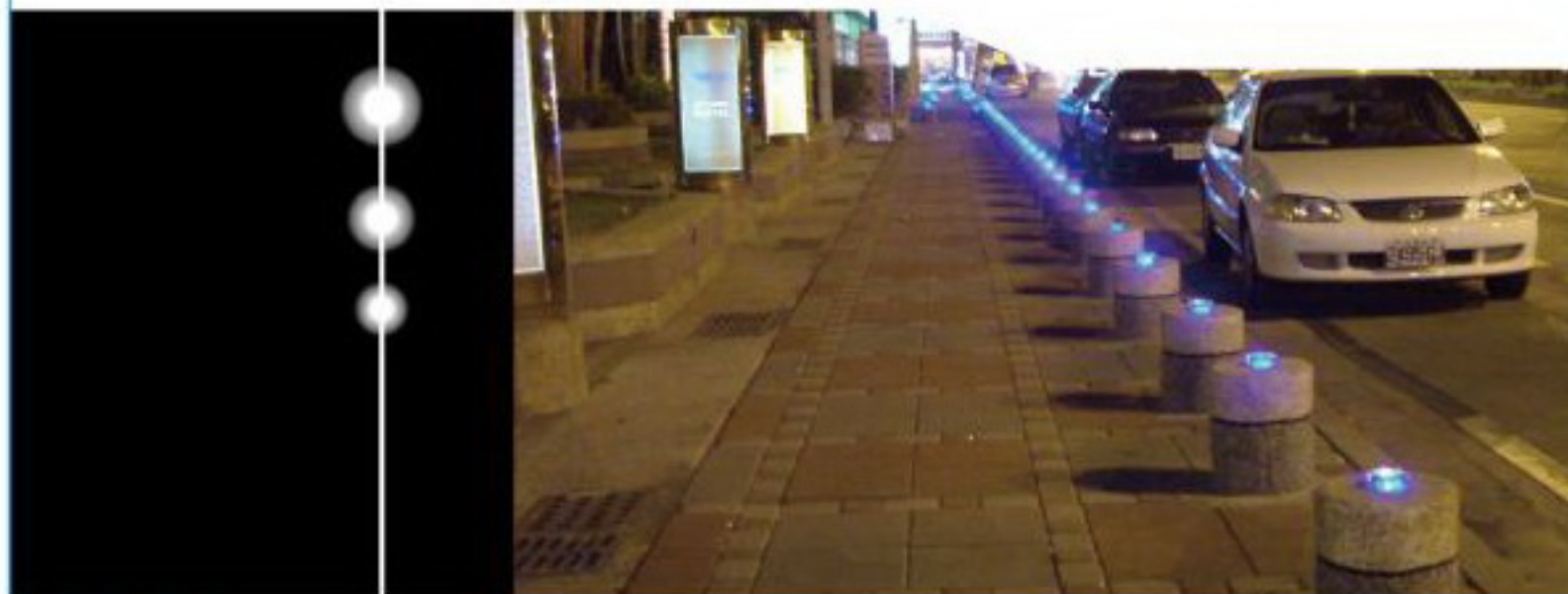
- **Highest strength:** The product is highly resistant to impact and compression
- **Driving safety:** The fully tempered glass shatters into small particles if broken, which cause no human injuries or vehicle damages.
- **Maintenance-free:** The surface is smooth and does not accumulate dust easily, thus no cleaning maintenance is required.
- **Durable reflection:** The reflection surface at bottom is processed with thermal spray processing for durable reflection illuminance.



SIG-19sp series



SIG-D50 series

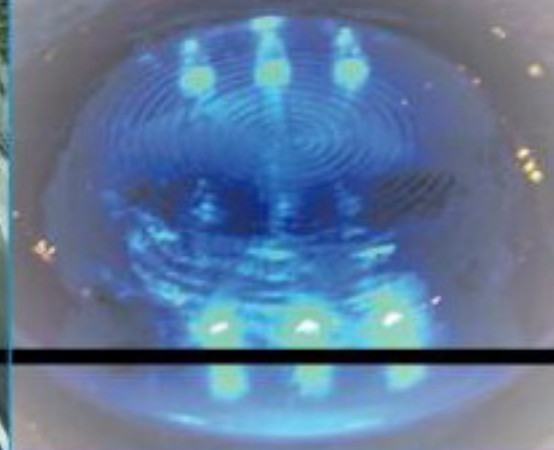


Solar Siglite tempered glass warning marker series

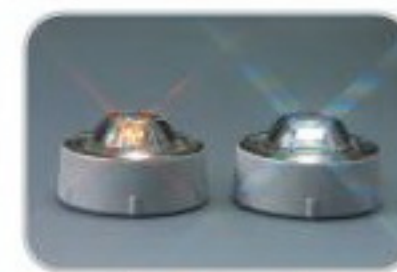
Item	Model no.	Color	Application
Solar Siglite tempered glass warning marker	A-666	Production on request	Urban roads, traffic islands, parking lots, Motor ways, bikeways, barriers, bridge abutments
	<b>A-68</b> Recommend	Production on request	

Product features:

- **Initiatively illuminant:** The conventional marking reflectors are passively illuminant (i.e. reflection only occurs under projection of vehicle's head lights), but Solar Siglite tempered glass warning marker can be initiatively illuminant for warning purpose.
- **Applicable on driveways:** The body is produced with Seih-Ying's tempered glass technology cooperating with sophisticated solar parts for requirement of safety and durability.
- **All-in-one format:** The part protruding out of road surface is jointless and therefore provides excellent water tightness.



A-666



A-68